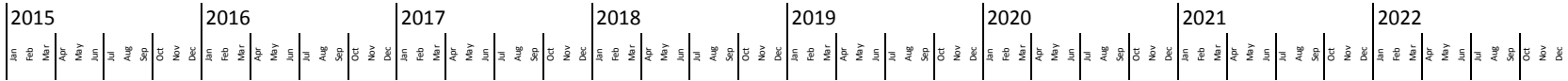


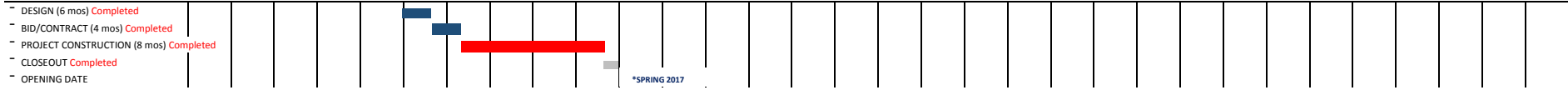
# MASTER SCHEDULE



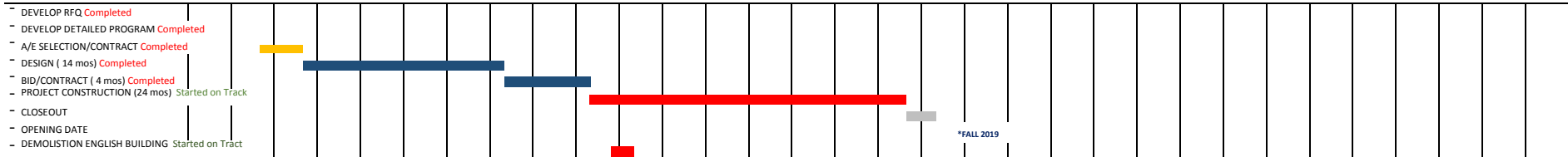
## Central Plant Phase I GC-Miller & Miller Mechanical Completed Final Cost- \$1,088,563



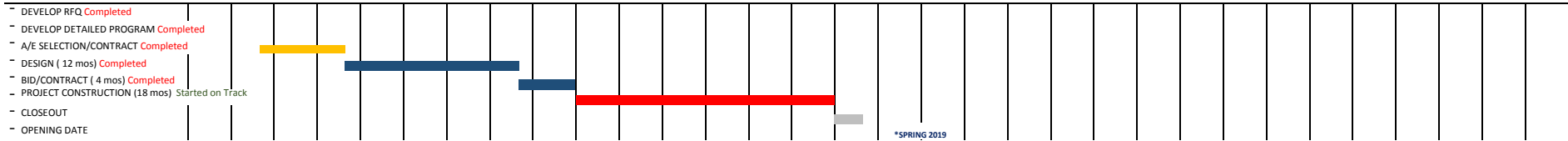
## Central Plant Phase II GC-Miller & Miller Mechanical Total Expected Cost- \$2,392,943

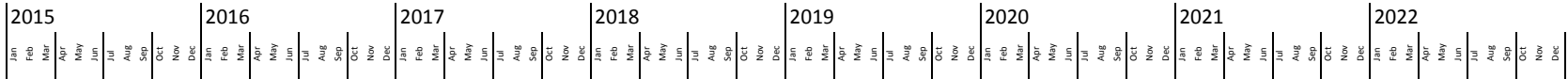


## East Campus-Music Phase II/Academic Building A/E-Richter Architects / BRW Architects GC- Bartlett Cocke / Beecroft, JV Total Authorized Budget- \$46,375,000



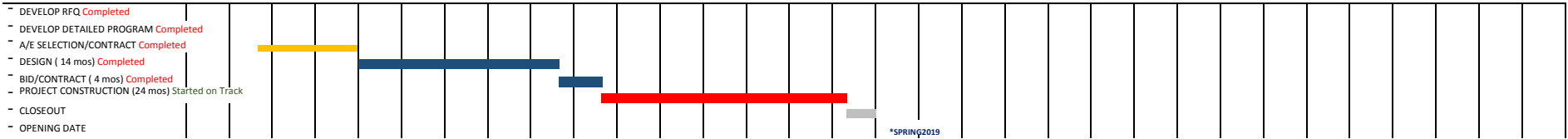
## West Campus-Workforce Development Center A/E-Turner Ramirez Architects GC- Weaver & Jacobs Constructors Total Authorized Budget- \$14,700,000





**West Campus-Emerging Technology Expansion**

A/E-Gignac Architects  
 GC- Weaver & Jacobs Constructors  
 Total Authorized Budget- \$8,700,000



**West Campus Site Improvements (Naismith/Hanson)**

- DEVELOP DETAILED PROGRAM  
 - DESIGN (6 mos)  
 - BID/CONTRACT (2 mos)  
 - PROJECT CONSTRUCTION (9 mos)  
 - CLOSEOUT  
 - OPENING DATE  
 - HAZMAT ABATEMENT  
 - DEMO OF GENERAL PURPOSE BLDG.



**Old Music Building-Renovations**

- DEVELOP RFQ  
 - DEVELOP DETAILED PROGRAM  
 - A/E SELECTION/CONTRACT  
 - DESIGN ( 12 mos)  
 - BID/CONTRACT ( 3 mos)  
 - HAZARDOUS MATERIAL ABATEMENT?  
 - PROJECT CONSTRUCTION (9 mos)  
 - CLOSEOUT  
 - OPENING DATE  
 - MOVE INTO NEW GENERAL/ACADEMIC/MUSIC BLDG



**Memorial Classroom Building-Renovations**

- DEVELOP RFQ  
 - DEVELOP DETAILED PROGRAM  
 - A/E SELECTION/CONTRACT  
 - DESIGN ( 12 mos)  
 - BID/CONTRACT ( 3 mos)  
 - HAZARDOUS MATERIAL ABATEMENT?  
 - PROJECT CONSTRUCTION (9 mos)  
 - CLOSEOUT  
 - OPENING DATE  
 - MOVE INTO NEW GENERAL ACADEMIC/MUSIC BLDG.



**Heldenfels-Renovations**

- DEVELOP RFQ  
 - DEVELOP DETAILED PROGRAM  
 - A/E SELECTION/CONTRACT  
 - DESIGN ( 12 mos)  
 - BID/CONTRACT ( 3 mos)  
 - HAZARDOUS MATERIAL ABATEMENT?  
 - PROJECT CONSTRUCTION (9 mos)  
 - CLOSEOUT  
 - OPENING DATE  
 - MOVE INTO MEMORIAL CLASSROOM



